

# SPARE PARTS

for refuse collection vehicles  
and road sweepers



# UNCOMPROMISING PROXIMITY TO OUR CUSTOMERS!

Three strong arguments ...

## **MANY COMPANIES TALK ABOUT SERVICE – PAUL WIEGAND DELIVERS SERVICE.**

Speed, proximity to our customers and quality are what set us apart – a difference that Paul Wiegand is justifiably proud of.



### **LOGISTICS** Fast delivery

The Paul Wiegand logistics concept enables all orders to be delivered Europe-wide within 24 hours.



### **QUALITY** Identical high quality across all manufacturers

All Paul Wiegand spare parts and customised products meet the highest quality standards and are carefully checked before delivery.

Process quality: certified to DIN EN ISO 9001:2015



### **SERVICE** Perfect customer care

Even when things need to happen quickly – Paul Wiegand employees are always friendly and technically professional.

# SAVE TIME AND MONEY

with spare parts management ...

Paul Wiegand GmbH has been the go-to spare parts specialist for the refuse collection industry for more than 28 years. Over 6,000 customers throughout Germany and across Europe rely on the company's product quality, consulting expertise, and exceptional product availability.

Paul Wiegand GmbH focuses on reliable 24-hour delivery service, a customer-based service concept, and a product range that is practically unique throughout Europe. It is the company's declared aim to offer its customers the widest possible range of services giving them, in turn, a measurable competitive edge.

At Paul Wiegand, customer focus means being closer to our customers than our competitors. We believe that our strengths lie in face-to-face personal contact, which is reflected in individual flexibility, an ability to improvise, and an understanding of our customer's tough industrial environment."

*Ottmar Rauch, Director*

*Martin Schulz, Director*



# OVER 100,000 SPARE PARTS DIRECTLY AVAILABLE

Directly from our warehouse – directly to the customer – directly for use

The value of spare parts lies in their availability. This applies to complete assemblies and to special small and individual components.

At Paul Wiegand, we rely on short delivery routes, an efficient warehouse concept, and a sophisticated overall logistics system to benefit our customers. Having a wide range of spare parts available is a top priority.

To ensure this, we built a second 1800-square metre warehouse in 2020. This means that we can now draw on a stock of 100,000 permanently available parts, enabling us to offer all customers maximum functional reliability. The range covers all vehicles and systems popular throughout Europe. We focus on standardised spare parts and equivalent-quality alternatives.

All relevant spare parts are available from Paul Wiegand – from simple bolts and electronic components to large parts. On request, complete assemblies can also be configured or entire application packages pre-assembled, saving valuable assembly time. And all supplied with an impressive product quality and machining expertise.



# PAUL WIEGAND: ONE NAME – ALL PARTS!

Quality lies in the detail

Quality and reliability are top priorities at Paul Wiegand to enable customers to fully concentrate on their core business. 24 hours a day – 365 days a year.



# CERTIFIED PROCESSES

for maximum precision ...

With its DIN ISO 9001:2015 quality management certification, Paul Wiegand guarantees the highest level of reliability for its customers. However, the company is not just satisfied with meeting the prescribed standards and having them regularly reviewed by independent auditors. Instead, Paul Wiegand is systematically dedicated to maximising and optimising its products and services. Employees endeavour to achieve the best possible results for customers and practically realise them in terms of design, logistics and

service. The Paul Wiegand GmbH overall concept is based on the perfect dovetailing of technical and commercial processes. Nothing is left to chance, from the selection of suppliers to internal handling and delivery. And you can rely on that throughout Europe at all times.



# 24-HOUR LOGISTICS THROUGHOUT EUROPE

Our word is our bond!



All stock parts arrive on schedule at the right place  
and at the right time. Overnight throughout Germany.  
Within 24 hours Europe-wide.

# PERFECT COORDINATION –

one cog meshes with another ...

If a vehicle or system fails, it usually happens at the worst possible time – when it is in use. Now is the time to act quickly. All it needs is a call to Paul Wiegand to get things moving – ending in a quick and cost-effective solution to the problem. In a nutshell: within 24 hours, Paul Wiegand turns every question into a practical answer, to get every vehicle and every system back on track.

It's not enough to just think in a customer-focussed way – it's also crucial that we act quickly and flexibly on behalf of our customer. With more than 28 years of experience in spare parts logistics for the refuse collection industry, Paul Wiegand GmbH is a genuine specialist provider. All its employees know precisely what they are doing and what matters to the customer.



Refuse collection vehicles are complex mobile pieces of equipment that need to fulfil the most exacting requirements.



Seamless processes are the basis of every functioning system. At Paul Wiegand, we coordinate everything to deliver benefits for you the customer.

# ONE-STOP SHOP – ONE-STOP SUPPLIER ...

Equipment and vehicle failures cannot be predicted – and it is equally hard to calculate which spare parts are required for rapid repair. In many cases, one spare part is all that is needed while, in other cases, a large number of different components need to be procured.

With just a single order – from just a single supplier – Paul Wiegand's customers can deal with faults quickly and reliably. From simple bolts to complex assemblies – over 100,000 quality spare parts are permanently available at Paul Wiegand, saving you time-consuming enquiries to different manufacturers and suppliers.

And even if a part is not immediately available, Paul Wiegand will procure it and ensure it gets to its destination as quickly as possible.



# FROM BOLTS TO ASSEMBLIES ...



**Bolts**



**Connectors**



**Proximity Switches**



**Push Buttons**



**Screw Fittings**

Paul Wiegand supplies equivalent-quality spare parts, accessories and wear parts for refuse collection vehicles, road sweepers and attachments manufactured by the following brands:

Faun, Geesink Norba, Haller, HS Fahrzeugbau, Terberg, Zöller, Faun Viatic, Bucher Municipal, Trilety, Aebi Schmidt, Johnston, Hako, Ravo and many more.

Paul Wiegand GmbH is a partner of:



# A COMPREHENSIVE RANGE –

Spare parts for refuse collection vehicles



**Press Plates**



**Guide Plates**



**Hopper Plates**



**Swinging Arms**



**Angle Sensors**



**Joysticks**



**Stop Buttons**



**Pressure Switches**



**Pumps**



**Contact Elements**



**Directional Valves**



**Electromagnetic Couplings**



**Gears**



**Button Station**



**Pins**



**Safety Barriers**



**Filter Elements**



**Hydraulic Cylinders**



**Footsteps**



**Seals**

## and Spare parts for road sweepers



**Suction Hoses**



**Blow Hoses**



**Hose Clips**



**Sockets**



**Rubber Aprons**



**Deflector Rubbers**



**Brushes**



**Rubber Side Apron**



**Solenoid Valves**



**Nozzles**



**Hydraulic Motors**



**Gas Struts**



**Brush Shafts**



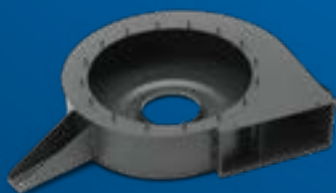
**Pneumatic Cylinders**



**Rollers**



**Wheels**



**Blower Housings**



**Gear Pumps**



**Tenslon Springs**



**Suction Shafts**

# LUIS | TURNING ASSIST SYSTEM

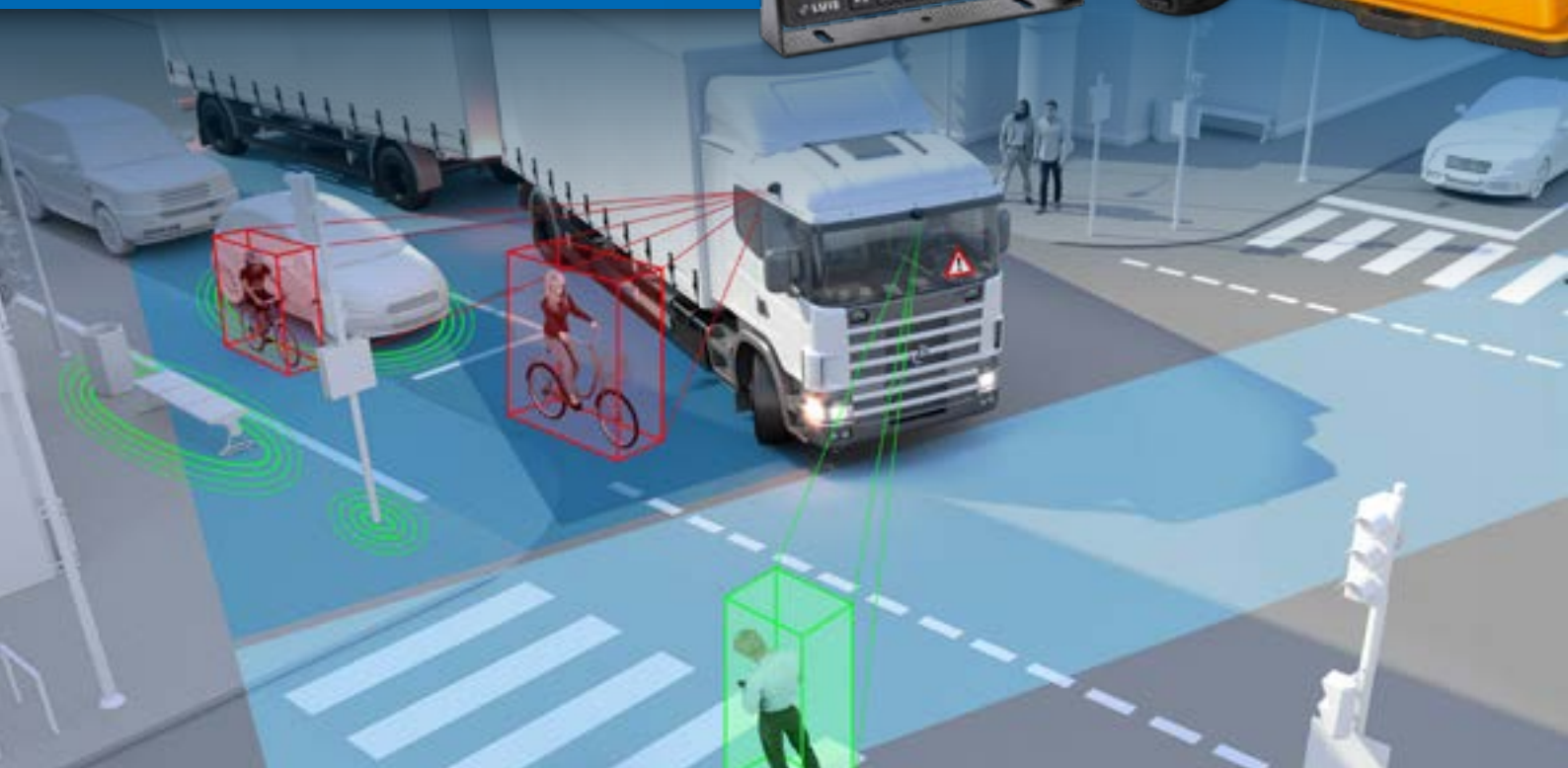
for standard equipment & retrofitting –  
avoid 60% of cornering accidents!



## BENEFITS

- » Visual warning for cyclists in the danger zone and additional acoustic warning in the event of an impending collision
- » Static objects are not detected to minimise false alarms
- » Cyclists 2 back are also detected, for instance behind parked cars
- » The system also works with vans and swap trailers
- » Full range of features even in the dark
- » Rapid installation
- » Carries German Vehicle Type Approval (ABE) and eligible for funding
- » Can be extended by a front camera to detect people crossing and avoid collisions

The Luis Turn Detect turning assist system detects cyclists and pedestrians. A visual warning and, if necessary, an acoustic signal warn the driver of impending collisions. Whether during the day or in the dark, the assist system protects passengers and road users on every trip.



# EVERYTHING IN VIEW –

## Camera system solutions from Paul Wiegand



### SAFETY HAS TOP PRIORITY IN TRAFFIC.

This is especially true for the refuse collection industry. Due to their size, technical features and purpose, refuse collection vehicles are difficult to manoeuvre and do not offer drivers an ideal rear view. The drivers of refuse collection vehicles can now safely handle every situation with Paul Wiegand camera systems – and always keep an eye on everything.

### EASY TO REMOVE AND CONVERT ...

Paul Wiegand camera monitoring systems can be installed with ease in any vehicle, depending on the type of vehicle. You will always find the right solution from Paul Wiegand, whether you have an original equipment requirement or wish to retrofit older vehicles.

### Safe processes ...

- » Optimum monitoring behind the vehicle
- » Safe and reliable monitoring of the dumping and pivoting areas
- » Improved monitoring of all traffic around the vehicle
- » Compliance with legal guidelines



# ALL-ROUND VISIBILITY SYSTEM

360° view / 270° front or rear view



Blind spots are the cause of many injuries and damage to vehicles and property. All vehicles have 'blind' areas that the driver cannot see, making it difficult to steer the vehicle safely.

Our 3D system provides a seamless 360° view around the vehicle. It cancels out blind spots and perfectly assists the driver when manoeuvring and parking. A complete view of the environment

saves lives, protects people, prevents damage to vehicles, and improves efficiency. The strengths of the system go beyond the avoidance of collisions with people and objects. It also provides a clear view at night with the help of the camera's integrated IR illumination.

- » 360° all-round view
- » Avoidance of damage when manoeuvring
- » Ease of manoeuvring and parking
- » Safe cornering
- » GPS tracking
- » Analysis of vehicle damage by video recordings
- » Easy to retrofit and integrate into existing display systems
- » Flexible display options
- » Suitable for use with high-pressure cleaners (protection class IP69K)
- » 270° view is possible
- » Customised adaptation of the vehicle image
- » Full HD 1080P resolution
- » Fast and simple to commission and calibrate





### MANOEVRING

The 360° all-round view enables the operator to manoeuvre their vehicle more effectively and quickly without the need for a guide.

### TURNING

The cameras' high HD resolution and enlarged display detects pedestrians and cyclist more quickly when cornering.

### GPS

Tracking GPS data allows the vehicle's movement to be tracked.

### RECORDING

The continuous recording of all camera images ensures clear regulation in the event of damage. The operator's prescribed documentary obligation is thus fulfilled when in operation.

### PARKING

The dynamic display of the camera images means that the driver always has the key moments in view.

### IR ILLUMINATION

In the dark, the cameras' built-in IR illumination reliably detects any obstacles.

### 360° ALL-ROUND VIEW / 270° REAR OR FRONT VIEW

Depending on the type of vehicle and its use, the system can also be calibrated with three cameras for a 270° view. Our monitor enables two to three more cameras to be controlled, depending on the situation, to monitor different areas of the vehicle, such as goods being transported, road sweepers or attachments.

### 360° ALLROUND VIEW



### 270° REAR VIEW



### 270° FRONT VIEW



# ALWAYS A NUMBER HARDER!

Custom-made Hardox steel wear plates

**HARDOX®**  
WEAR PLATE

HARDOX steel is always the material of choice when you expect maximum stability, a high payload and resistance to wear!

## **HARD BUT GOOD TO WORK WITH ...**

The plates get their extraordinary hardness by quenching them in a water bath, a method that produces an ideal hardness despite their low alloy content. However, despite their hardness, the plates are easy to bend and weld.

## **HOW TO INCREASE**

### **YOUR PAYLOAD WITH HARDOX ...**

Hardox steel is not lighter, but is considerably harder than conventional coarse steel. It allows thinner plates to be produced. This saves considerable weight and so increases the payload of your vehicle.

## **HARDOX FOR YOU TOO!**

Just ask us! Benefit from the experience and expertise of application engineers, and put your trust in a partner with 40 years of experience and a global market presence.

## **Hardox is:**

- » Extraordinarily hard
- » Good to handle,  
e.g. bend and weld
- » Available in 6 degrees  
of hardness, adapted  
to the respective application



# SAFETY ON THE ROAD –

Telma's retarder range  
from Paul Wiegand



The Telma brand name is synonymous world-wide with superlative quality electromagnetic retarders. Telma's retarders are designed to effectively relieve pressure on the main brakes of commercial vehicles, and thus minimise wear and tear. Their applications range from light vans from 3.5 tonnes to large vehicles, such as mobile cranes and flat-bed loaders.

Telma's original retarders, retrofit kits and spare parts have been an integral part of the Paul Wiegand range since 2005.

## The benefits of Telma retarders at a glance:

- » Enhanced safety by performing most braking operations
- » Reduced costs due to the longer service life of the main brakes
- » Minimal environmental impact due to their smooth and emission-free operation
- » Improved driving comfort through jerk-free deceleration and automatic control
- » Constant reliability, thanks to a durable design principle
- » Maximum cost-effectiveness due to short payback times



# „MAKE OLD FROM NEW“

As good as new = reliable!

We make your fleet fit for cost-effective operation!



Workshop and head office of FHS GmbH based in Sülzfeld, centrally located in the heart of Germany!

As a waste management company, you can take advantage of the concentrated industry experience of two well-established, strong partners.

- » Paul Wiegand GmbH –  
Spare-parts partner  
for the refuse collection industry
- » FHS Fahrzeughandel & Service GmbH –  
Your service team to maintain  
and repair your vehicle fleet

The name FHS Fahrzeughandel & Service GmbH has been synonymous with the highest quality and most modern technology in the field of wear and general overhaul as well as repair of refuse collection vehicles, their superstructures and disposal systems since 1992. The company also specialises in the installation of skip and hook-lift skip systems, rear loaders, waste compaction systems and the maintenance and repair of the lifting equipment for rear and side loaders.

A state of the art in-house paint shop for a professional appearance to the outside world



## Makeover of your vehicles and equipment, including

- » Basic renovation of vehicle chassis
- » Renewal of rims, tyres
- » Reinforcement or alignment of body parts and frames
- » Replacement of worn parts and wearing plates
- » Major overhaul of skips and containers
- » Partial and complete painting
- » Maintenance and repair of lighting, braking systems and all safety-relevant components



# SAFE – CLEAN – SIMPLE

Multi-way connections, couplings and joints



## The applications are diverse:

Quick change of hydraulic attachment tools and accessories, among others on:

- » Refuse collection vehicles
- » Wheel loaders, compact loaders
- » Hydraulic excavators, material handling machines, loading machines
- » Construction cranes
- » Road sweepers, snow and ice clearance machines

## QUICK, GOOD AND CLEAN CONNECTIONS!

Effortlessly and without losing oil!

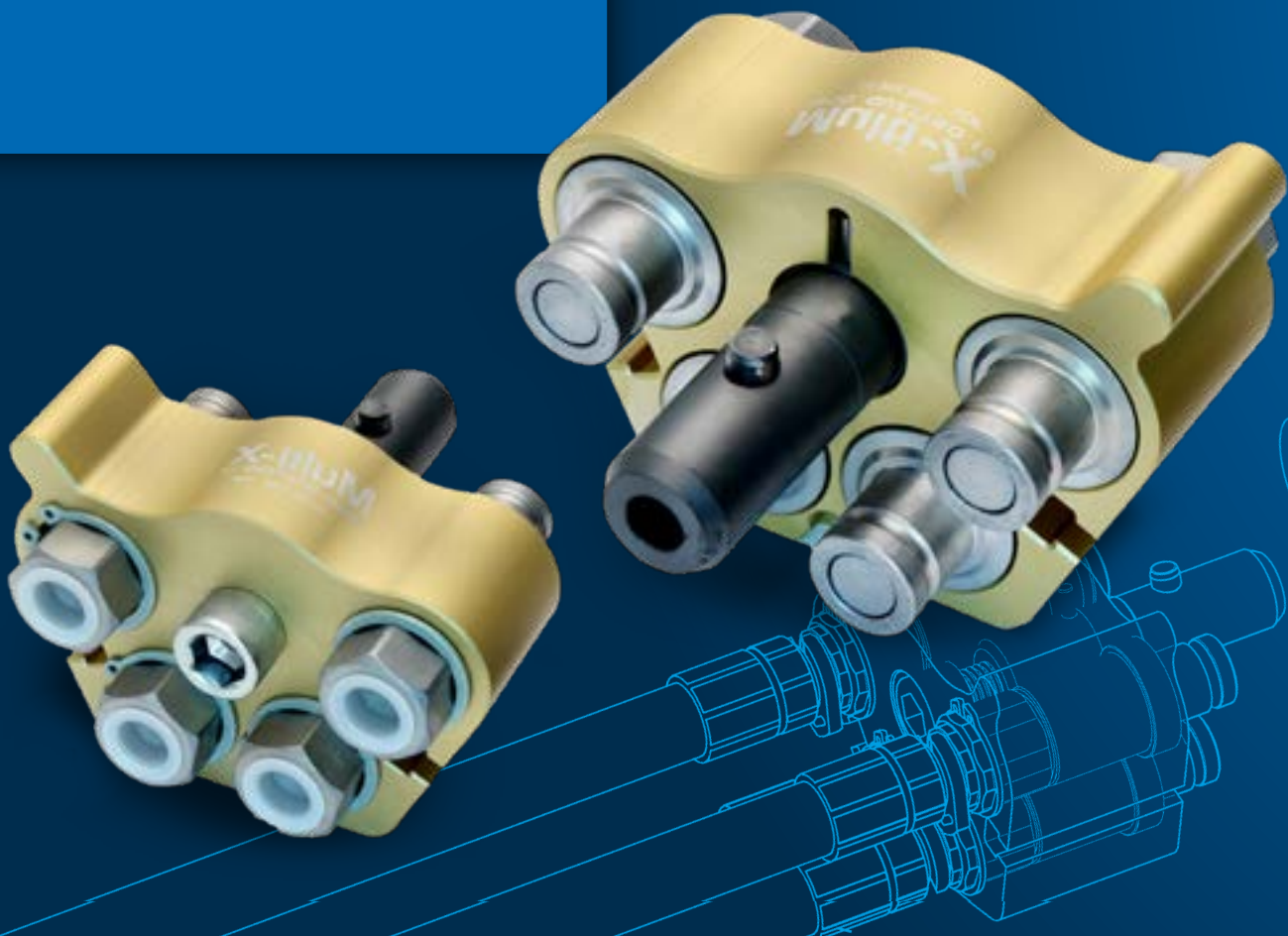
Quick-couplings, connections and multi-way connections from CEJN

„high quality & innovative“!

CEJN - The Global Connect Specialist!

Quickly and simply change grippers, pliers, special attachments, sorting grapples and many more.

Save time, staff and the hassle of contaminated substrate and the loss of hydraulic oil.



# COMPACT EURO STANDARD COUPLINGS

eSafe Serie 320/410 | DN 7.6/10.4



eSafe series 320 and 410 couplings are easy to use, high-performance couplings with a long service life. They are one hand-operated safety couplings, which release their pressure before disengaging, eliminating the risk of a hose kick-back. A thread sealant is already applied to the external thread of the couplings and nipples. The couplings have a smaller external dimension than comparable models. The fully automatic process simplifies operation. eSafe complies with ISO standard 4414 and EN 983.

## Main features:

- » Highest flow on the market
- » Compact design
- » Extreme durability
- » Safety through depressurisation
- » Simple to use

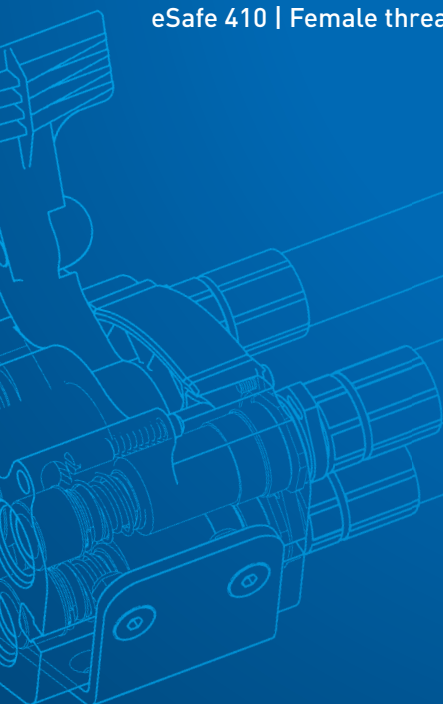
eSafe 320 | Hose connection

eSafe 320 | Male thread connection

eSafe 320 | Female thread connection

eSafe 410 | Male thread connection

eSafe 410 | Female thread connection



# ALL-ROUND SAFETY –

LED R65 & LPB LED warning beacons,  
rechargeable LED beacons



## Main features:

- » Dual flashing light
- » 9 High Power  
Osram Oslon 3 W LEDs
- » EMC-approved (ECE Reg. 10)
- » Voltage 10 to 30 V DC
- » Complies with the IP67  
international safety standard
- » Life-time sealing  
against the ingress  
of dust and moisture
- » Very low power consumption  
(max. 1.5 A at 13.8 V / 0.8 A at 24 V)
- » Reliable operation at extreme  
temperatures (-30° C to +50° C)

LAP has combined the latest LED technology with advanced optics to produce the unique „LED R65“ warning beacon (certified to ECER65). Designed and manufactured in the UK, the high-power LEDs emit a bright 360-degree flashing pattern and guarantee maximum visibility.



# LED WORK LIGHTS

The right solution for every application



HELLA work lights provide an entry-level introduction to LED technology and offer a good solution when converting from halogen to LED. LED work lights provide significantly improved illumination compared to halogen work lights. The significantly higher colour temperature of 6,000° Kelvin is very similar to daylight. This means that

colours are easier to distinguish in the dark and so prevent rapid eye fatigue when working at night. HELLA LED work lights are fully maintenance-free and have a considerably longer service life than halogen headlight bulbs.

## Main features:

- » Housing: square, round
- » Lens: polycarbonate
- » Technology: high-performance LED
- » 6,000° Kelvin
- » IP6K9K
- » HD Erwitte
- » R23 certification



# A POWERFUL TEAM!

Internal and field sales personnel work hand in hand to ensure that our customers are satisfied

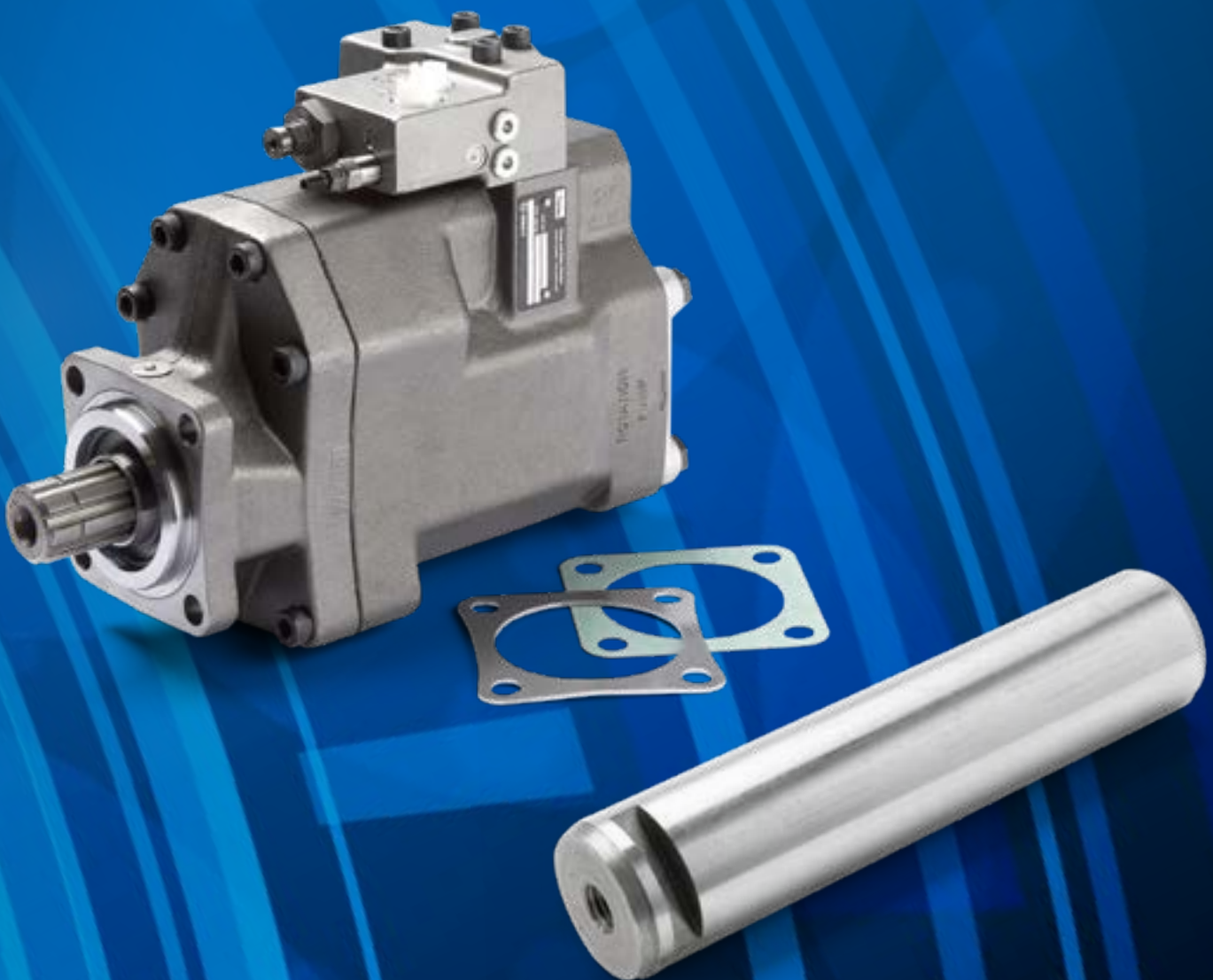
## On course for success for more than 28 years

- 1993** Paul Wiegand GmbH founded in Bad Soden-Salmünster in Germany
- 1997** The company relocates its headquarters to Ebersburg-Schmalnau
- 2002** Certified to DIN ISO 9001:2000
- 2003** Ottmar Rauch is appointed the new Managing Director
- 2004** Paul Wiegand GmbH becomes a certified training company for wholesale and foreign trade merchants
- 2005** Takeover of Telma representation in Germany
- 2006** Online spare parts store at [www.paulwiegand.de](http://www.paulwiegand.de)
- 2007** Launch of the „Ideas Day“ event
- 2009** Exclusive representative for Samson vacuum pumps in Germany
- 2010** Advanced certification to DIN ISO 9001:2008
- 2012** Paul Wiegand Piezas de recambio, S.L. is founded in Barcelona
- 2013** New build and relocation of the company's headquarters to Eichenzell-Kerzell
- 2015** Launch of the „Hydraulikhelden“ brand
- 2017** Advanced certification to DIN ISO 9001:2015
- 2018** Relaunch of the website: [www.paulwiegand.de](http://www.paulwiegand.de) including shop
- 2019** „Hydraulikhelden“ brand name changes to HydraCraft.  
Relaunch of the website: [www.hydracraft.info](http://www.hydracraft.info)
- 2020** Expansion of warehouse facilities by 1800 sqm, creating space for around 100,000 parts
- 2020** Advanced certification to DIN ISO 9001:2015

### EXPERIENCE GROWS FROM DIALOGUE ...

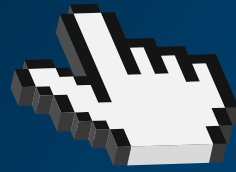
Paul Wiegand GmbH has been much more than a spare parts supplier for more than 28 years. The company is a real service partner with a wealth of good ideas to significantly simplify its customers' day-to-day business and make them measurably more profitable. Paul Wiegand relies on intensive

dialogue to ensure it remains close to its customers, discovers their requirements at first hand and, understands their very specific requirements profiles. This involves events, like the Paul Wiegand Ideas Days, as well as visits to customers' premises and systematic involvement in all key industry fairs.



# www.paulwiegand.de

Fast and reliable search for the right spare part -  
the Paul Wiegand Online Portal ...



Paul Wiegand's Online Portal is perfectly laid out, clearly designed, and easy to use. You will find a wide range of up-to-date information and practical features at [www.paulwiegand.de](http://www.paulwiegand.de) to enable you to carry out your spare parts management conveniently from your own computer at any time. All Paul Wiegand customers have access to the practical online shop, the current delivery programme, up-to-the-minute prices and a wealth of additional information in PDF format. Simply click

on the products you require, place them in the shopping basket, select the delivery address, and place the order. On receipt of the online order, every customer will receive an immediate order confirmation, and can be confident that their spare parts will be available at their requested location within 24 hours.



### INDIVIDUAL CUSTOM SOLUTIONS ...

Paul Wiegand offers large customers with their own SAP-based goods management system the option of an efficient link to the PW online portal. A company's spare parts requirement can therefore be directly determined from the SAP system using a proprietary OCI interface, and automatically retrieved from the Paul Wiegand online store. Paul Wiegand's IT experts are happy to assist with more information at any time.



### Save time and money online...

- » Fast price and availability enquiries
- » Simple ordering and processing
- » A wealth of product information
- » Extensive download features
- » Easy to use, thanks to clear user interface
- » Simple linking to SAP systems or OCI interfaces


# PAUL WIEGAND CATALOGUES

An impressively wide range!

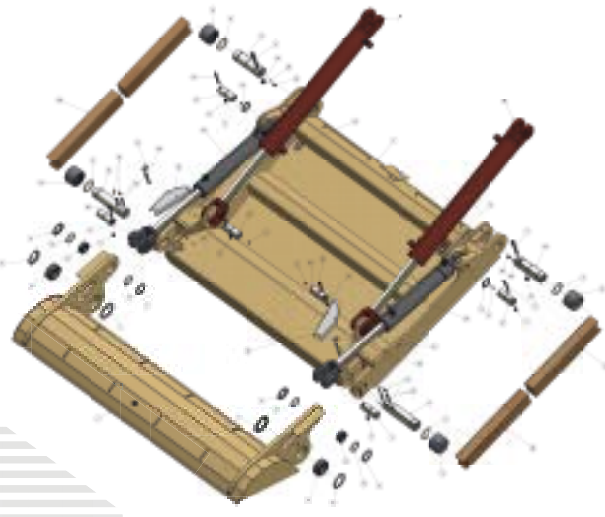


Comprehensive reference works that we have exhaustively compiled with a wealth of details. Many parts are listed with an image – for easier identification and, of course, all come with an

article number and comparison number! All catalogues are naturally available to download as PDFs!



**PRESSWERK  
FAUN  
VARIOPRESS**



**Stückliste Presswerk:**

1	01020115	1	Druckplatte
2	01020115	1	Druckplatte
3	01020115	1	Druckplatte
4	01020115	1	Druckplatte
5	01020115	1	Druckplatte
6	01020115	1	Druckplatte
7	01020115	1	Druckplatte
8	01020115	1	Druckplatte
9	01020115	1	Druckplatte
10	01020115	1	Druckplatte
11	01020115	1	Druckplatte
12	01020115	1	Druckplatte
13	01020115	1	Druckplatte
14	01020115	1	Druckplatte
15	01020115	1	Druckplatte
16	01020115	1	Druckplatte
17	01020115	1	Druckplatte
18	01020115	1	Druckplatte
19	01020115	1	Druckplatte
20	01020115	1	Druckplatte
21	01020115	1	Druckplatte
22	01020115	1	Druckplatte
23	01020115	1	Druckplatte
24	01020115	1	Druckplatte
25	01020115	1	Druckplatte
26	01020115	1	Druckplatte
27	01020115	1	Druckplatte
28	01020115	1	Druckplatte
29	01020115	1	Druckplatte
30	01020115	1	Druckplatte
31	01020115	1	Druckplatte
32	01020115	1	Druckplatte
33	01020115	1	Druckplatte
34	01020115	1	Druckplatte
35	01020115	1	Druckplatte
36	01020115	1	Druckplatte
37	01020115	1	Druckplatte
38	01020115	1	Druckplatte
39	01020115	1	Druckplatte
40	01020115	1	Druckplatte
41	01020115	1	Druckplatte
42	01020115	1	Druckplatte
43	01020115	1	Druckplatte
44	01020115	1	Druckplatte
45	01020115	1	Druckplatte
46	01020115	1	Druckplatte
47	01020115	1	Druckplatte
48	01020115	1	Druckplatte
49	01020115	1	Druckplatte
50	01020115	1	Druckplatte
51	01020115	1	Druckplatte
52	01020115	1	Druckplatte
53	01020115	1	Druckplatte
54	01020115	1	Druckplatte
55	01020115	1	Druckplatte
56	01020115	1	Druckplatte
57	01020115	1	Druckplatte
58	01020115	1	Druckplatte
59	01020115	1	Druckplatte
60	01020115	1	Druckplatte
61	01020115	1	Druckplatte
62	01020115	1	Druckplatte
63	01020115	1	Druckplatte
64	01020115	1	Druckplatte
65	01020115	1	Druckplatte
66	01020115	1	Druckplatte
67	01020115	1	Druckplatte
68	01020115	1	Druckplatte
69	01020115	1	Druckplatte
70	01020115	1	Druckplatte
71	01020115	1	Druckplatte
72	01020115	1	Druckplatte
73	01020115	1	Druckplatte
74	01020115	1	Druckplatte
75	01020115	1	Druckplatte
76	01020115	1	Druckplatte
77	01020115	1	Druckplatte
78	01020115	1	Druckplatte
79	01020115	1	Druckplatte
80	01020115	1	Druckplatte
81	01020115	1	Druckplatte
82	01020115	1	Druckplatte
83	01020115	1	Druckplatte
84	01020115	1	Druckplatte
85	01020115	1	Druckplatte
86	01020115	1	Druckplatte
87	01020115	1	Druckplatte
88	01020115	1	Druckplatte
89	01020115	1	Druckplatte
90	01020115	1	Druckplatte
91	01020115	1	Druckplatte
92	01020115	1	Druckplatte
93	01020115	1	Druckplatte
94	01020115	1	Druckplatte
95	01020115	1	Druckplatte
96	01020115	1	Druckplatte
97	01020115	1	Druckplatte
98	01020115	1	Druckplatte
99	01020115	1	Druckplatte
100	01020115	1	Druckplatte

**Stücklisten Hydraulikzylinder:**

1	01020115	1	Druckplatte
2	01020115	1	Druckplatte
3	01020115	1	Druckplatte
4	01020115	1	Druckplatte
5	01020115	1	Druckplatte
6	01020115	1	Druckplatte
7	01020115	1	Druckplatte
8	01020115	1	Druckplatte
9	01020115	1	Druckplatte
10	01020115	1	Druckplatte
11	01020115	1	Druckplatte
12	01020115	1	Druckplatte
13	01020115	1	Druckplatte
14	01020115	1	Druckplatte
15	01020115	1	Druckplatte
16	01020115	1	Druckplatte
17	01020115	1	Druckplatte
18	01020115	1	Druckplatte
19	01020115	1	Druckplatte
20	01020115	1	Druckplatte
21	01020115	1	Druckplatte
22	01020115	1	Druckplatte
23	01020115	1	Druckplatte
24	01020115	1	Druckplatte
25	01020115	1	Druckplatte
26	01020115	1	Druckplatte
27	01020115	1	Druckplatte
28	01020115	1	Druckplatte
29	01020115	1	Druckplatte
30	01020115	1	Druckplatte
31	01020115	1	Druckplatte
32	01020115	1	Druckplatte
33	01020115	1	Druckplatte
34	01020115	1	Druckplatte
35	01020115	1	Druckplatte
36	01020115	1	Druckplatte
37	01020115	1	Druckplatte
38	01020115	1	Druckplatte
39	01020115	1	Druckplatte
40	01020115	1	Druckplatte
41	01020115	1	Druckplatte
42	01020115	1	Druckplatte
43	01020115	1	Druckplatte
44	01020115	1	Druckplatte
45	01020115	1	Druckplatte
46	01020115	1	Druckplatte
47	01020115	1	Druckplatte
48	01020115	1	Druckplatte
49	01020115	1	Druckplatte
50	01020115	1	Druckplatte
51	01020115	1	Druckplatte
52	01020115	1	Druckplatte
53	01020115	1	Druckplatte
54	01020115	1	Druckplatte
55	01020115	1	Druckplatte
56	01020115	1	Druckplatte
57	01020115	1	Druckplatte
58	01020115	1	Druckplatte
59	01020115	1	Druckplatte
60	01020115	1	Druckplatte
61	01020115	1	Druckplatte
62	01020115	1	Druckplatte
63	01020115	1	Druckplatte
64	01020115	1	Druckplatte
65	01020115	1	Druckplatte
66	01020115	1	Druckplatte
67	01020115	1	Druckplatte
68	01020115	1	Druckplatte
69	01020115	1	Druckplatte
70	01020115	1	Druckplatte
71	01020115	1	Druckplatte
72	01020115	1	Druckplatte
73	01020115	1	Druckplatte
74	01020115	1	Druckplatte
75	01020115	1	Druckplatte
76	01020115	1	Druckplatte
77	01020115	1	Druckplatte
78	01020115	1	Druckplatte
79	01020115	1	Druckplatte
80	01020115	1	Druckplatte
81	01020115	1	Druckplatte
82	01020115	1	Druckplatte
83	01020115	1	Druckplatte
84	01020115	1	Druckplatte
85	01020115	1	Druckplatte
86	01020115	1	Druckplatte
87	01020115	1	Druckplatte
88	01020115	1	Druckplatte
89	01020115	1	Druckplatte
90	01020115	1	Druckplatte
91	01020115	1	Druckplatte
92	01020115	1	Druckplatte
93	01020115	1	Druckplatte
94	01020115	1	Druckplatte
95	01020115	1	Druckplatte
96	01020115	1	Druckplatte
97	01020115	1	Druckplatte
98	01020115	1	Druckplatte
99	01020115	1	Druckplatte
100	01020115	1	Druckplatte

Paul Wiegand GmbH | Eschengrund 5 | 36124 Eichenzell | Telefon: +49 (0) 6659 / 9862 0 | Telefax: +49 (0) 6659 / 9862 150 | info@paulwiegand.de | www.paulwiegand.de

Practical exploded drawings including parts lists for ease of spare part identification



**Übersicht Zöller Delta Lifter  
ab Baujahr 03/2010**

Näherungsschalter, Bedieneinheiten, Drehwinkelgeber

**11330220** Vergleichs-nr.: 0706044975  
Ultraschallsensor Zöller Delta 2301  
M18 I: 64 Öffner(nc) sn: 25-400

**11330370** Vergleichs-nr.: 0230134617  
Sensorverteilung Zöller Delta 2301  
links 8-fach ab 03-2010

**11330372** Vergleichs-nr.: 0230134619  
Hubwagenverteilung Zöller Delta 2301  
X14 links ab 03-2010

**11330366** Vergleichs-nr.: 0230134615  
Bedieneinheit Zöller Delta 2301  
links 10-fach ab 03-2010

**11380015** Vergleichs-nr.: 0706042163  
Näherungsschalter Zöller Delta 2301  
M18 I: 45 Öffner(nc)/Schließer(nc) sn: 5



**11330373** Vergleichs-nr.: 0706089288  
Drehwinkelgeber Zöller Delta 2301  
mit Stecker 270° 24V ab 03-2010

**11330492** Vergleichs-nr.: 0230134622  
Verteiler Zöller Delta 2301  
Drehwinkelgeber X4

**11330369** Vergleichs-nr.: 0230134616  
Sensorverteilung Zöller Delta 2301  
rechts 8-fach ab 03-2010

**11330396** Vergleichs-nr.: 0706089277  
Drehwinkelgeber Zöller Delta 2301 2x220°

**11330365** Vergleichs-nr.: 0230134614  
Bedieneinheit Zöller Delta 2301  
rechts 10-fach ab 03-2010

**11330371** Vergleichs-nr.: 0230134618  
Hubwagenverteilung Zöller Delta 2301  
X13 rechts ab 03-2010

Paul Wiegand GmbH | Eschengrund 5 | 36124 Eichenzell | Telefon: +49 (0) 6659 / 9862 0 | Telefax: +49 (0) 6659 / 9862 150 | info@paulwiegand.de | www.paulwiegand.de

Paul Wiegand always keeps you up to date with all new products



**PAUL WIEGAND®**

Paul Wiegand GmbH  
Eschengrund 5 | 36124 Eichenzell  
Germany

Phone: +49 (0) 6659 / 9862 0  
Fax: +49 (0) 6659 / 9862 150  
E-Mail: [info@paulwiegand.de](mailto:info@paulwiegand.de)

[www.paulwiegand.de](http://www.paulwiegand.de)

## Equivalent-quality spare parts

Precision-manufactured and reliable

## One name - all parts!

Quality lies in the detail!

## Over 100,000 items in stock

The right part easily found every time -  
thanks to the comparison number

## 24-hour logistics throughout Europe!

Our speed & flexibility – your competitive edge!

**[www.paulwiegand.de](http://www.paulwiegand.de)**

Open 24/7 for you!

Find information & order online